



**TRANSPORTATION CABINET**

Frankfort, Kentucky 40622  
www.transportation.ky.gov/

**Steven L. Beshear**  
Governor

**Michael W. Hancock, P.E.**  
Secretary

October 17, 2012

CALL NO. 316  
CONTRACT ID NO. 121050  
ADDENDUM # 1

Subject: Rowan County, FD04 SPP 103 0064 134-139  
Letting October 19, 2012

- (1) Revised - General Summary - Page 20 of 120
- (2) Added - Crash Cushion - Page 34(a) of 120
- (3) Revised - Maintenance of Traffic - Pages 51-52 of 120
- (4) Revised - Bid Items - Pages 118-119 of 120

Proposal revisions are available at <http://transportation.ky.gov/Construction-Procurement/>.

If you have any questions, please contact us at 502-564-3500.

Sincerely,

A handwritten signature in blue ink that reads "Ryan Griffith".

Ryan Griffith  
Director  
Division of Construction Procurement

RG:ks  
Enclosures



An Equal Opportunity Employer M/F/D

**ROWAN COUNTY**  
**PAVEMENT REHABILITATION, MILEPOST 134.75 TO 138.30**  
**ITEM NO. 9-2027.00**  
**GENERAL SUMMARY**

ITEM NUMBER	ITEM	UNIT	QUANTITY
24191ER	DURABLE WATERBOURNE MARKING - 12" W	L.F.	3,078
24189ER	DURABLE WATERBOURNE MARKING - 6" W	L.F.	49,686
24190ER	DURABLE WATERBOURNE MARKING - 6" Y	L.F.	40,620
6567	PAVE STRIPING - THERMO STOP BAR - 12 IN	L.F.	60
6511	PAVEMENT STRIPING TEMPORARY PAINT - 6"	L.F.	5,000
2268	REMOVE & REPLACE FENCE (WOVEN WIRE TYPE I)	L.F.	39,300
1825	ISLAND CURB AND GUTTER	L.F.	5
2696	SHOULDER RUMBLE STRIPS - SAWED ③	L.F.	76,021
20071EC	JOINT ADHESIVE	L.F.	37,488
22664EN	WATER BLASTING EXISTING STRIPE	L.F.	2,500
3171	CONCRETE BARRIER WALL TYPE 9T	L.F.	700
2003	RELOCATE TEMPORARY CONCRETE BARRIER	L.F.	700
8903	CRASH CUSHION TYPE VI CLASS BT TL3	EACH	1
2898	RELOCATE CRASH CUSHION	EACH	1
24094EC	PARTIAL DEPTH PATCHING	C.Y.	12
08504	EPOXY SAND SLURRY	S.Y.	117
08510	REM. EPOXY BIT. FORIGN OVERLAY	S.Y.	1523
08526	CONC. CLASS "M" FULL DEPTH PATCH	C.Y.	4
08534	CONCRETE OVERLAY-LATEX	C.Y.	63.4
08549	BLAST CLEANING	S.Y.	1660
02347	WATER GATE TYPE I	EACH	6
1	DGA BASE ③	TON	2,048
342	CLASS 4 ASPHALT SURFACE 0.38A PG76-22 ③	TON	16,812
100	ASPHALT SEAL AGGREGATE ③ ④	TON	498
103	ASPHALT SEAL COAT ③ ④	TON	124
217	CLASS 4 ASPHALT BASE 1.0D PG64-22 ③	TON	133
1002ONS	FUEL ADJUSTMENT	DOLLAR	23,628
1003ONS	ASPHALT ADJUSTMENT	DOLLAR	41,637
2568	MOBILIZATION	L.S.	1
2569	DEMOBILIZATION	L.S.	1

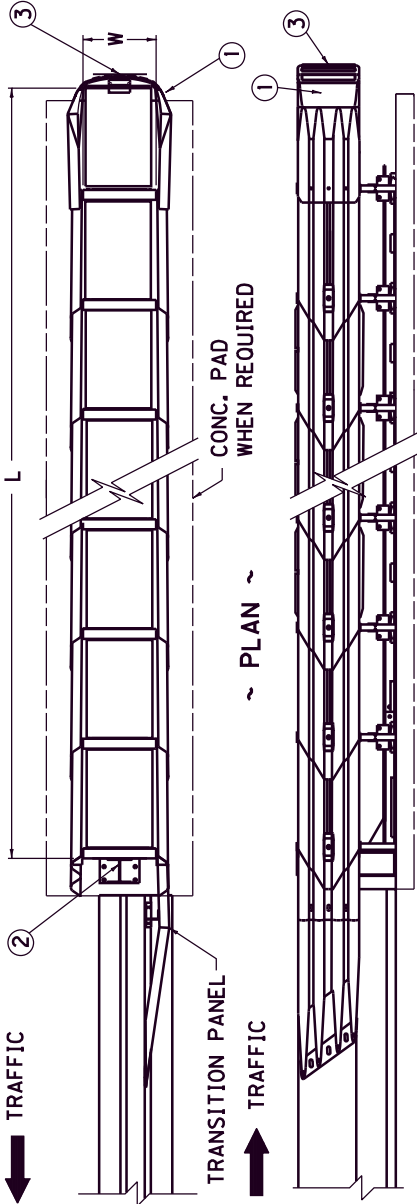
① TO BE USED, BUT NOT LIMITED TO, PIPE EROSION, WASHOUT REPAIR BEHIND GUARDRAIL, PERF. PIPE HDWL'S. AND OTHER LOCATIONS AS DIRECTED BY THE ENGINEER.

④ INCLUDES 12.8 TONS OF ITEM 100 AND 1.53 OF ITEM 103 FROM FORESLOPE REPAIR DETAIL

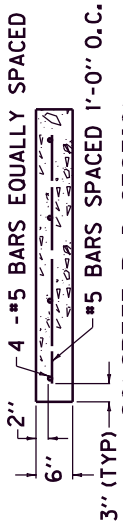
② INCLUDES 400 S.Y. TO BE USED AS DIRECTED BY THE ENGINEER.

③ CARRIED OVER FROM PAVING SUMMARY

COUNTY OF	ITEM NO.	SHEET
ROWAN	9-2027.00	



~ PICTORIAL VIEW ~



~ CONCRETE PAD SECTION ~  
 WHEN REQUIRED  
 (PAD 4'-0" WIDE x SEE CHART FOR LENGTH)

~ ELEVATION ~

~NOTES~

1. CRASH CUSHION TYPE VI, CLASS B, ☆, △
- ☆ EITHER TEST LEVEL 2 (TL2) OR TEST LEVEL 3 (TL3), AS REQUIRED.
- △ SEE "CONNECTION DETAILS OF CRASH CUSHION TYPE VI TO DOUBLE FACE GUARDRAIL".
2. CRASH CUSHION TYPE VI-BT OR CT IS DEPICTED ATTACHED TO A CONCRETE BARRIER (TEMPORARY).
3. WHEN CRASH CUSHION TYPE VI-BT OR CT IS ATTACHED TO STEEL "W" BEAM GUARDRAIL (DOUBLE FACE), ALL APPLICABLE DETAILS SHOWN ON CUR. STD. DWG. RBC-110. "CONNECTION DETAIL OF CRASH CUSHION TYPE VI TO DOUBLE FACE GUARDRAIL" SHALL BE REQUIRED.
4. WHEN CRASH CUSHION TYPE VI-BT OR CT IS ATTACHED TO STEEL "W" BEAM GUARDRAIL (DOUBLE FACE), THE TRANSITION PANEL SHALL BE ELIMINATED.
5. IN A TWO-WAY TRAFFIC SITUATION FOR A 6" OR 9" TOP WIDTH WALL THE UNIT SHALL BE OFFSET FROM THE CENTERLINE OF THE WALL AS SHOWN IN THE PLAN VIEW. FOR A 12" TOP WIDTH WALL, THE UNIT SHALL BE CENTERED ON THE END OF THE BARRIER.
6. FOR ONE-WAY APPROACH TRAFFIC THE UNIT SHALL BE CENTERED ON THE END OF THE BARRIER.
7. THE COMPLETE INSTALLATION SHALL MEET ALL APPLICABLE REQUIREMENTS OF ENERGY ABSORPTIONS INC. OR TRINITY INDUSTRIES INC.
8. ANCHORAGE DEVICES TO SECURE CRASH CUSHION TO THE EXISTING SURFACE SHALL BE SHOWN ON APPROVED SHOP DRAWINGS.
9. WHEN REQUIRED, THE CONCRETE PAD, PAD EXCAVATION AND STEEL REINFORCEMENT, INSTALLED IN PLACE SHALL BE INCLUDED IN THE UNIT PRICE BID FOR CRASH CUSHION TYPE VI. USE CLASS AA CONCRETE TO CONSTRUCT CONCRETE PAD (SEE CONCRETE PAD SECTION FOR STEEL REQUIREMENTS). THE PAD SHALL BE CURED AND FINISHED AS EITHER SIDEWALK OR PAVEMENT. THE CROSS SLOPE OF THE PAD OR PAVEMENT SHALL NOT EXCEED 5%. THE PAD WILL NOT BE REQUIRED WHEN UNIT IS CONSTRUCTED ON RIGID PAVEMENT.
10. THE PAD WILL NOT BE REQUIRED WHEN THE UNIT IS CONSTRUCTED ON EXISTING PAVEMENT OR BRIDGES AND THE COST OF ANCHORING SHALL BE INCLUDED IN THE UNIT PRICE OF THE CRASH CUSHION.
11. USE WITH CURRENT STANDARD DRAWING RBC-110 WHEN CONNECTING TO DOUBLE FACE GUARDRAIL.
12. PERMISSIBLE ALTERNATES FOR CRASH CUSHION TYPE VI-BT OR CT ARE PATENTED (ONE SOURCE) ITEMS: ENERGY ABSORPTION SYSTEMS, INC. OF CHICAGO, IL., TRINITY INDUSTRIES, INC. OF DALLAS, TX, OR SCI. PRODUCTS, INC. OF ST. CHARLES, IL.
13. THE MANUFACTURER SHALL FURNISH TWO (2) SETS OF SHOP DRAWINGS TO THE CONTRACTOR WITH EACH INSTALLATION.

CLASS	SPEED (MPH)	ATTENUATOR PRODUCT NAME		APPROX. CU. YD. CONC. FOR PAD	
		MODEL	LENGTH		
B	45 & LESS	TL2	14'-0"	1.12	
			3-BAY QUADGUARD	12'-0"	0.87
	OVER 45	TL3	21'-0"	1.63	
			6-BAY QUADGUARD	21'-0"	1.53

A CLASS CT CAN BE USED AT THE CONTRACTOR'S DISCRETION.

~ LEGEND ~

- ① NOSE ASSEMBLY
- ② CONSTRUCTION ZONE BACKUP
- ③ OBJECT MARKER TYPE I, (SEE CUR. MUTCD MANUAL FOR DETAILS) CENTER HORIZ. AND VERT.

USE WITH CUR. STD. DWG. RBE-060 (SEE NOTE II, FOR ACCOMPANYING DRAWINGS).

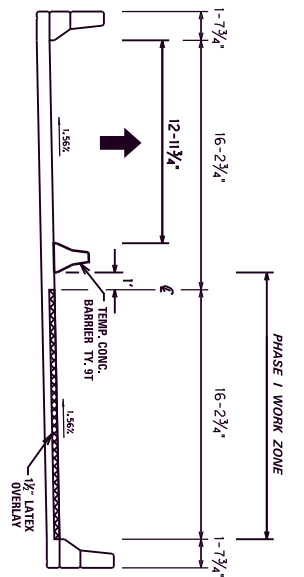
KENTUCKY  
 DEPARTMENT OF HIGHWAYS

CRASH CUSHION  
 TYPE VI-BT

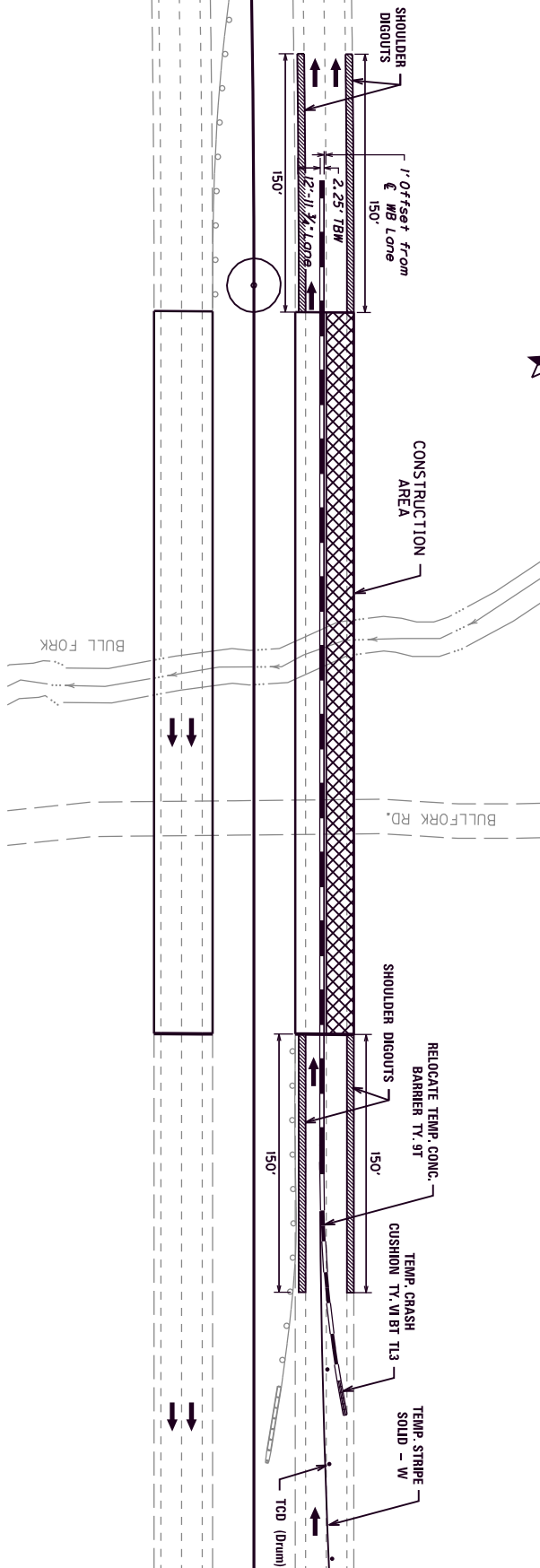
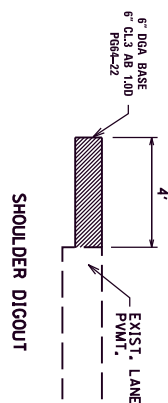
Added: 8-24-01  
 Contract ID: 0121  
 Page 34 of 100  
 SUBMITTED: 8-24-01  
 DIRECTOR DIVISION OF HIGHWAY DESIGN

# PHASE I

1. INSTALL TEMPORARY LANE CLOSURE (Incidental to M.O.T.)
2. CONSTRUCT INSIDE SHOULDER DIGOUT AND PAVEMENT REPLACEMENT.
3. INSTALL LANE CLOSURE (REFER TO STANDARD DRAWING TTC-115-02).
4. INSTALL TEMPORARY CONCRETE BARRIER AND CRASH CUSHION.
5. CONSTRUCT OVERLAY ON OUTSIDE LANE.
6. CONSTRUCT OUTSIDE SHOULDER DIGOUT AND PAVEMENT REPLACEMENT.



PHASE I BARRIER WALL LOCATION  
WESTBOUND



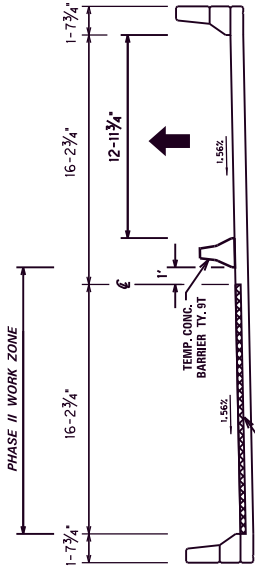
COUNTY OF	ITEM NO.
ROWAN	9-2027.00

SCALE : 1" = 100'  
MAINTENANCE OF TRAFFIC  
I-64 MP 134.7 OVER  
BULLFORK RD., PHASE I

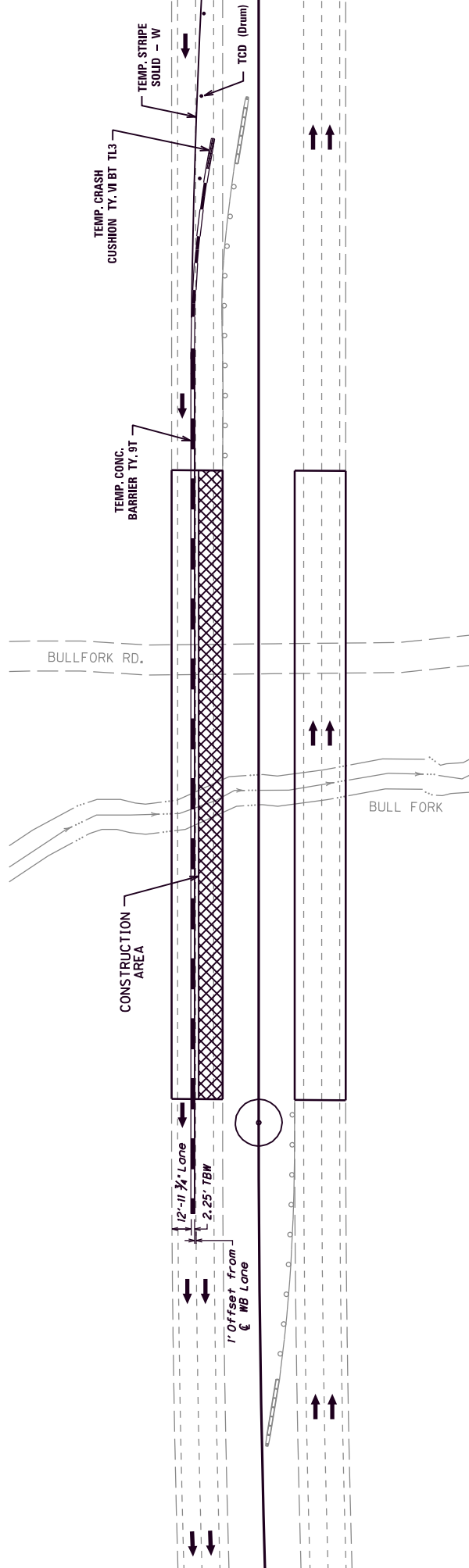
COUNTY OF	ROWAN
ITEM NO.	9-2027.06

### PHASE II

1. INSTALL LANE CLOSURE (SEE STANDARD DRAWING TTC-115-02).
2. RELOCATE TEMPORARY CONCRETE BARRIER AND CRASH CUSHION.
3. CONSTRUCT OVERLAY ON INSIDE LANE.



### PHASE II BARRIER WALL LOCATION WESTBOUND



SCALE : 1" = 100'

MAINTENANCE OF TRAFFIC  
 1-64 MP 134.7 OVER  
 BULLFORK RD. PHASE II

## PROPOSAL BID ITEMS

Report Date 10/17/12

### SECTION: 1 - PAVING

LINE	BID CODE	ALT	DESCRIPTION	QUANTITY	UNIT	UNIT PRICE	EXTENDED PRICE
0010	00001		DGA BASE	2,048.00	TON		
0020	00100		ASPHALT SEAL AGGREGATE	498.00	TON		
0030	00103		ASPHALT SEAL COAT	124.00	TON		
0040	00217		CL4 ASPH BASE 1.00D PG64-22	133.00	TON		
0050	00342		CL4 ASPH SURF 0.38A PG76-22	16,812.00	TON		

### SECTION: 2 - ROADWAY

LINE	BID CODE	ALT	DESCRIPTION	QUANTITY	UNIT	UNIT PRICE	EXTENDED PRICE
0060	00078		CRUSHED AGGREGATE SIZE NO 2	3,000.00	TON		
0070	01028		PERF PIPE HEADWALL TY 3-4 IN	4.00	EACH		
0080	01825		ISLAND CURB AND GUTTER	5.00	LF		
0090	01982		DELINEATOR FOR GUARDRAIL MONO DIRECTIONAL WHITE	250.00	EACH		
0100	01983		DELINEATOR FOR GUARDRAIL MONO DIRECTIONAL YELLOW	20.00	EACH		
0110	01984		DELINEATOR FOR BARRIER - WHITE	20.00	EACH		
0120	02003		RELOCATE TEMP CONC BARRIER	700.00	LF		
0130	02268		REMOVE & REPLACE FENCE	39,300.00	LF		
0140	02347		WATER GATE TYPE 1	6.00	EACH		
0150	02365		CRASH CUSHION TYPE IX-A	1.00	EACH		
0160	02369		GUARDRAIL END TREATMENT TYPE 2A	7.00	EACH		
0170	02381		REMOVE GUARDRAIL	822.50	LF		
0180	02483		CHANNEL LINING CLASS II	1,105.00	TON		
0190	02484		CHANNEL LINING CLASS III	1,500.00	TON		
0200	02562		SIGNS	744.00	SQFT		
0210	02575		DITCHING AND SHOULDERING	18,757.00	LF		
0220	02650		MAINTAIN & CONTROL TRAFFIC	1.00	LS		
0230	02671		PORTABLE CHANGEABLE MESSAGE SIGN	6.00	EACH		
0240	02676		MOBILIZATION FOR MILL & TEXT	1.00	LS		
0250	02677		ASPHALT PAVE MILLING & TEXTURING	16,812.00	TON		
0260	02696		SHOULDER RUMBLE STRIPS-SAWED	76,021.00	LF		
0270	02775		ARROW PANEL	2.00	EACH		
0280	02898		RELOCATE CRASH CUSHION	1.00	EACH		
0290	03171		CONCRETE BARRIER WALL TYPE 9T	700.00	LF		
0300	03240		BASE FAILURE REPAIR	2,812.00	SQYD		
0310	03383		PVC PIPE-4 IN	20.00	LF		

**PROPOSAL BID ITEMS**

Report Date 10/17/12

**SECTION: 2 - ROADWAY**

LINE	BID CODE	ALT	DESCRIPTION	QUANTITY	UNIT	UNIT PRICE	EXTENDED PRICE
0320	05950		EROSION CONTROL BLANKET	15,000.00	SQYD		
0330	06412		STEEL POST MILE MARKERS	8.00	EACH		
0340	06417		FLEXIBLE DELINEATOR POST-W	183.00	EACH		
0350	06418		FLEXIBLE DELINEATOR POST-Y	21.00	EACH		
0360	06511		PAVE STRIPING-TEMP PAINT-6 IN	5,000.00	LF		
0370	06546		PAVE STRIPING-THERMO-12 IN W	60.00	LF		
0380	06592		PAVEMENT MARKER TYPE V-B W/R	131.00	EACH		
0390	06593		PAVEMENT MARKER TYPE V-B Y/R	107.00	EACH		
0400	08903		CRASH CUSHION TY VI CLASS BT TL3 (REVISED: 10-17-12)	1.00	EACH		
0410	10020NS		FUEL ADJUSTMENT (REVISED: 10-17-12)	23,628.00	DOLL	\$1.00	\$23,628.00
0420	10030NS		ASPHALT ADJUSTMENT (REVISED: 10-17-12)	41,637.00	DOLL	\$1.00	\$41,637.00
0430	20071EC		JOINT ADHESIVE	37,514.00	LF		
0440	21802EN		G/R STEEL W BEAM-S FACE (7 FT POST)	822.50	LF		
0450	23143ED		KPDES PERMIT AND TEMP EROSION CONTROL	1.00	LS		
0460	23237EN10M		WATERBLAST STRIPE REMOVAL	2,500.00	LF		
0470	24189ER		DURABLE WATERBORNE MARKING-6 IN W	49,686.00	LF		
0480	24190ER		DURABLE WATERBORNE MARKING-6 IN Y	40,620.00	LF		
0490	24191ER		DURABLE WATERBORNE MARKING-12 IN W	3,078.00	LF		
0500	24489EC		INLAID PAVEMENT MARKER	918.00	EACH		

**SECTION: 3 - BRIDGE**

LINE	BID CODE	ALT	DESCRIPTION	QUANTITY	UNIT	UNIT PRICE	EXTENDED PRICE
0510	08504		EPOXY SAND SLURRY	117.00	SQYD		
0520	08510		REM EPOXY BIT FOREIGN OVERLAY	1,523.00	SQYD		
0530	08526		CONC CLASS M FULL DEPTH PATCH	4.00	CUYD		
0540	08534		CONCRETE OVERLAY-LATEX	63.40	CUYD		
0550	08549		BLAST CLEANING	1,660.00	SQYD		
0560	24094EC		PARTIAL DEPTH PATCHING	12.00	CUYD		

**SECTION: 4 - MOB AND DEMOB**

LINE	BID CODE	ALT	DESCRIPTION	QUANTITY	UNIT	UNIT PRICE	EXTENDED PRICE
0570	02568		MOBILIZATION	1.00	LS		
0580	02569		DEMOBILIZATION	1.00	LS		